

Ultimate guide: Microsoft's latest print solutions

Kyocera explains how Microsoft Universal Print and Windows Protected Print (WPP) affect Microsoft users and work with Kyocera technology.



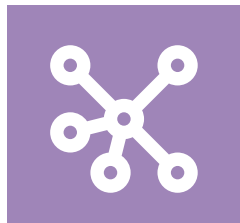
Introducing Microsoft Universal Print and Windows Protected Print

Microsoft has introduced new printing technologies, including **Microsoft Universal Print** and **Windows Protected Print (WPP)**, in an effort to create a more secure and efficient printing environment for Microsoft Windows users. These solutions make managing your print environment simpler, reducing risks of data breaches and creating a more unified way of monitoring devices.

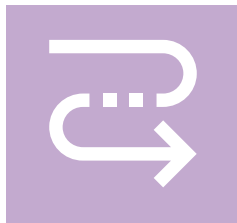
Universal Print focuses on simplifying and modernizing secure printing through the cloud, while WPP ensures secure internal network print functionality. Both are valuable for organizations aiming to improve productivity and security in their printing processes.



**Secure
printing with
the cloud**



**Secure internal
network
printing**



**Improved
workflow
productivity**



**Increased
document
security**



**Simple
print
management**



Microsoft Universal Print

This is a cloud-based print management service that makes printing easier and more efficient. Instead of relying on local print servers, **Universal Print** allows users to connect printers directly to the cloud. This makes it easier for IT teams to set up and manage printers and for employees to print, especially in hybrid or remote work environments.

Universal Print is designed to handle **printing tasks only**, not copying, faxing, or scanning.

The key benefits of Universal Print include:



No Print Servers

No need for on-premises servers, simplifying infrastructure and reducing costs.



Convenience

Print from Internet-connected device without installing drivers.



Centralized Management

Manage all print devices securely through your Microsoft Azure Management console.



No Print Drivers

Traditional print drivers like the Kyocera KX Driver are not utilized, simplifying printer management by eliminating the need for specific drivers.



Scalability

Easily add or remove printers from the system as needed.



Microsoft 365 Integration

Seamlessly integrates with OneDrive, SharePoint, and other Microsoft products.



Advanced Features

Supports features like pull printing for secure document retrieval.

Most Kyocera printers and MFPs work well with Universal Print without extra costs or additional technology. For others, you can use the Universal Print Connector, which can be downloaded from the Microsoft Download Center. Please refer to our Technical White-paper for additional information.

Windows Protected Print Mode (WPP)

WPP is a security feature for printing sensitive documents. It enhances security by eliminating the need for third-party drivers, which have been a significant source of vulnerabilities for some companies. WPP ensures that only authorized users can view or print confidential documents by encrypting print jobs.

The key benefits of WPP include:



Simplified Printing

No third-party print drivers are required, allowing for simpler setup and reduced potential security risks.



Consistent Experience

Ensures a reliable and uniform printing experience across different devices and manufacturers.



Compatibility

WPP works with Kyocera's color and B&W printers and MFPs.



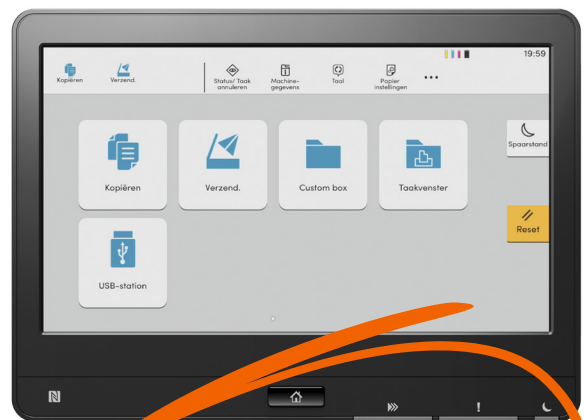
Improved Data Protection

Prevents unauthorized access to printed documents.

Kyocera is 100% compatible and supports WPP through direct communication. However, the ease of navigation utilizing advanced features with WPP is not as simple as our user-friendly KX-Driver.

WPP is primarily designed for Windows 11, version 24H2, and later versions. For older versions of Windows, such as Windows 10 and earlier, WPP is not available. Users on these older versions can utilize the embedded OS printer profiles to reflect the same level of management as WPP.

Microsoft recommends users start migrating to WPP Print Services, which are expected to become the required print services. An official announcement is expected in 2025.



Kyocera supports the implementation of these solutions

How Kyocera is helping its customers adapt to the new Microsoft print innovations:



Device Compatibility

Kyocera has MFPs and printers that natively support Universal Print. This eliminates the need for additional connectors or complex setups. Products moving forward will continue to support Universal Print compatibility.



Centralized Management

Kyocera devices can be managed through the Microsoft Azure management portal, allowing IT administrators to share printers across the organization and manage them efficiently.



Support for Hybrid Work Environments

Kyocera's integration with Universal Print supports the needs of a hybrid workplace, enabling secure print job submissions from any location.



How to prepare for the new Microsoft solutions

There are some simple steps you can take to ensure that the transition process is smooth and straightforward:

Assess Your Current Infrastructure

- Check your printer's compatibility with Universal Print.
- Ensure your network has the required bandwidth and security settings for cloud printing.

Plan the Transition to Universal Print/WPP

- Test the system with a pilot group to identify and resolve issues.
- Roll out the implementation in phases to minimize disruptions.

Provide Training and Support

- Train end-users on how to access printers and manage print jobs.
- Train IT staff on setup, permissions management, and troubleshooting.

Leverage Available Resources

- Use Kyocera's detailed configuration whitepaper for setup guidance.
- Access support from Kyocera and Microsoft's documentation, help centers, and community forums.

By following these steps, your business can transition smoothly to Universal Print and WPP, unlocking the benefits of secure and efficient print solutions. Kyocera is here to support you every step of the way.

Addressing challenges with implementation

Transitioning to Universal Print and WPP can present several challenges, but with proper planning, customers can overcome them effectively.

Compatibility issues are a primary concern, as all printer models require direct Universal Print communication or the Universal Print connector for integration. Additionally, transitioning from traditional drivers to Universal Print's environment can affect navigation and finishing options.

Network configuration and communication with the cloud can be complex. Ensuring seamless Universal Print connectivity for all devices is crucial to avoid disruptions.

User training and adaptation is essential, as employees must familiarize themselves with new workflows, such as the Universal Print profile. Businesses' IT staff must also be trained to provide support and resolve issues effectively.

“Leveraging resources from Kyocera and Microsoft, businesses can ensure a smooth transition to secure printing.”



Exploring the benefits of Kyocera Cloud Print and Scan and Microsoft Universal Print

End users may wonder how Universal Print differs from KCPS. Below is a table outlining the different features and capabilities:

Features	KCPS	Microsoft Universal Print
Data Processing	50% Print, 50% Scan	Only Printing*
User Tracking	Pages per user	Job Level (Page Counts planned by 2025)
Driver & Interface	KX Driver, Easy User Interface (UI)	Universal Print Print Profile or Kyocera Print Center, Easy Navigation (Currently both the Print Center and Universal Print profile do not support most finishing features)
Scanning Options	Multiple Options: Scan to KCPS Cloud, Microsoft SharePoint, OneDrive, Google Drive, Box and scan-to-self via secure download link	Scanning is not supported through Universal Print
Device Compatibility	Most Kyocera Devices	Printers and MFPs can be configured directly or with the connector.
Authentication	Azure/Entra OAuth 2	Azure AAD Modern Authentication
Support	On-site & Phone (with contract)	Web & Phone (under Office 365 agreement)
Fleet Management	KCPS Web Portal	Azure Server Management Tools

*Universal Print is designed to handle printing tasks only. To manage copying, faxing and scanning functions directly, you will need to utilize KCPS.

Windows Protected Print Mode Questions:

Will the following functionalities still work if using the KX driver?

Features	KX Driver 8.5X	Windows Protected Print
Advanced Graphic User Interface with Easy Navigation	"Yes" Provides exceptional navigation that any user can understand.	"No" WPP Provides Drop Down selection for most functionalities.
Paper Sizes	"Yes" Paper and Envelopes Sizes	"Yes" Paper and Envelopes Sizes
Paper Types	"Yes" Stock and Coating Types	"Yes" Stock and Coating Types
Image Up to Multiple Pages	"Yes" Inside the KX driver	"Yes" From Windows Default Print Page
Duplex Flip On Long / Flip On Short Front To Back / Back to Front	"Yes" With Easy Illustration of Pages to ensure the correct setting is selected	"Yes" The feature is supported
Collate or Non-Collate	"Yes" By Sets	"Yes" By Sets
Color Print Modes	"Yes" Color, Auto, Monochrome in Basic Choices	"Yes" Color, Auto, Grey Scale, Monochrome
Scaling	"Yes" 20% to 500%	"Yes" Fit and Fill
Cassette Selection	"Yes" Offers Full Cassette Access	"Yes" Offers full Cassette Access
Output Tray Selection	"Yes" Offers all Output Options on Device	"Yes" Offers all Output Options on Device
Advanced Color Management	"Yes" The ability to set resolution quality levels, capturing document type and adding color profiles.	"Yes" Limited to full color, document, type and add color profiles or utilize Windows suite of color profiles and adjustments
Finishing Staple, Hole punch and Folding & Binding for booklets	"Yes" If the device is configured with these finishing features the options are available, providing detailed illustration of what was selected to ensure the client's output is correct before printing.	"Yes" If the device is configured with these finishing features, the options are available.
Copy / Set Count	"Yes" Up To 999	"Yes" Up To 999
Private Print	"Yes" Pin Code Release at MFP	"No"
Color Optimizer	"Yes" Option is built into drivers	"No"
Eco Print	"Yes"	"No"
Inserts / Cover Mode	"Yes"	"No"
Watermark	"Yes"	"No"
Prescribe Support	"Yes" With PCL enabled	"No"
Job Accounting	"Yes"	"No" For device job accounting

WPP Questions

If WPP is enabled, will KCPS as it stands today stop working? Yes, it will stop working.

If WPP is enabled, will Kyocera Net Manager (KNM) stop working? No.

If WPP is enabled, will MyQ as it stands today stop working? No.

If WPP is enabled, will Kyocera PRESCRIBE as it stands today stop working? Yes, it will stop working.

Microsoft Universal Print Questions:

Will the following functionalities still work if using the KX driver?

Features	KX Driver 8.5X	MS Universal Print
Advanced Graphic User Interface with Easy Navigation	"Yes" Provides exceptional navigation that any user can understand.	"No" WPP Provides Drop Down selection for most functionalities.
Paper Sizes	"Yes" Paper and Envelopes Sizes	Very limited to basic set paper sizes
Paper Types	"Yes" Stock and Coating Types	"No"
Image Up to Multiple Pages	"Yes" Inside the KX driver	"Yes" From Windows Default Print Page
Duplex Flip On Long / Flip On Short Front To Back / Back to Front	"Yes" With Easy Illustration of Pages to ensure the correct setting is selected	"Yes" The feature is supported
Collate or Non-Collate	"Yes" By Sets	"Yes" From Windows Default Print Page
Color Print Modes	"Yes" Color, Auto, Monochrome in Basic Choices	"Yes" Color, Auto, Grey Scale, Monochrome
Scaling	"Yes" 20% to 500%	"Yes" From Windows Default Print Page
Cassette Selection	"Yes" Offers Full Cassette Access	"No"
Output Tray Selection	"Yes" Offers all Output Options on Device	"No" Only Output Tray
Advanced Color Management	"Yes" The ability to set resolution quality levels, capturing document type and adding color profiles.	"No"
Finishing Staple, Hole punch and Folding & Binding for booklets	"Yes" If the device is configured with these finishing features the options are available, providing detailed illustration of what was selected to ensure the client's output is correct before printing.	"No"
Copy / Set Count	"Yes" Up To 999	"Yes" Up To 999 From Windows Default Print Page
Private Print	"Yes" Pin Code Release at MFP	"Yes, with QR code"
Color Optimizer	"Yes" Option is built into drivers	"No"
Eco Print	"Yes"	"No"
Inserts / Cover Mode	"Yes"	"No"
Watermark	"Yes"	"No"
Prescribe Support	"Yes" With PCL enabled	"No"
Job Accounting	"Yes"	"No" For device job accounting

Microsoft Universal Print Questions

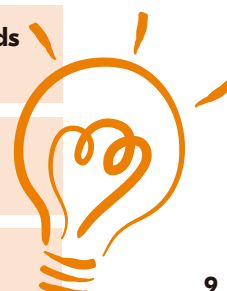
Does it allow other Print, Fax and Scan drivers that are installed continue to function? Yes.

If Universal Print is utilized, will KCPS as it stands today stop working? No.

If Universal Print is enabled, will MyQ as it stands today stop working? No.

If Universal Print is utilized, will Kyocera Net Manager (KNM) stop working? No.

If Universal Print is utilized, will Kyocera PRESCRIBE as it stands today stop working? Yes, for Universal Print Driver. No, for Existing PCL Drivers.



Kyocera Document Solutions has championed innovative technology since 1934. We enable our customers to turn information into knowledge, excel at learning and surpass others. With professional expertise and a culture of empathetic partnership, we help organizations put knowledge to work to drive change.

KYOCERA Document Solutions America
225 Sand Road, PO Box 40008
Fairfield, New Jersey 07004-0008, USA
Tel: 973-808-8444



[kyoceradocumentsolutions.us](https://www.kyoceradocumentsolutions.us)